

The background features a grey, cracked wall with several colorful analog clocks (yellow, cyan, green) appearing to burst through the cracks. The clocks are arranged in a circular pattern around a central green box. The central box contains the text 'Measurement: Time'.

Measurement: Time





Lesson 3

Telling the time to 5 minutes



Starter

What time is being shown by each clock? What can you remember about the minute and hour hand?



The minute hand is the longer hand.



One o'clock

Half past one

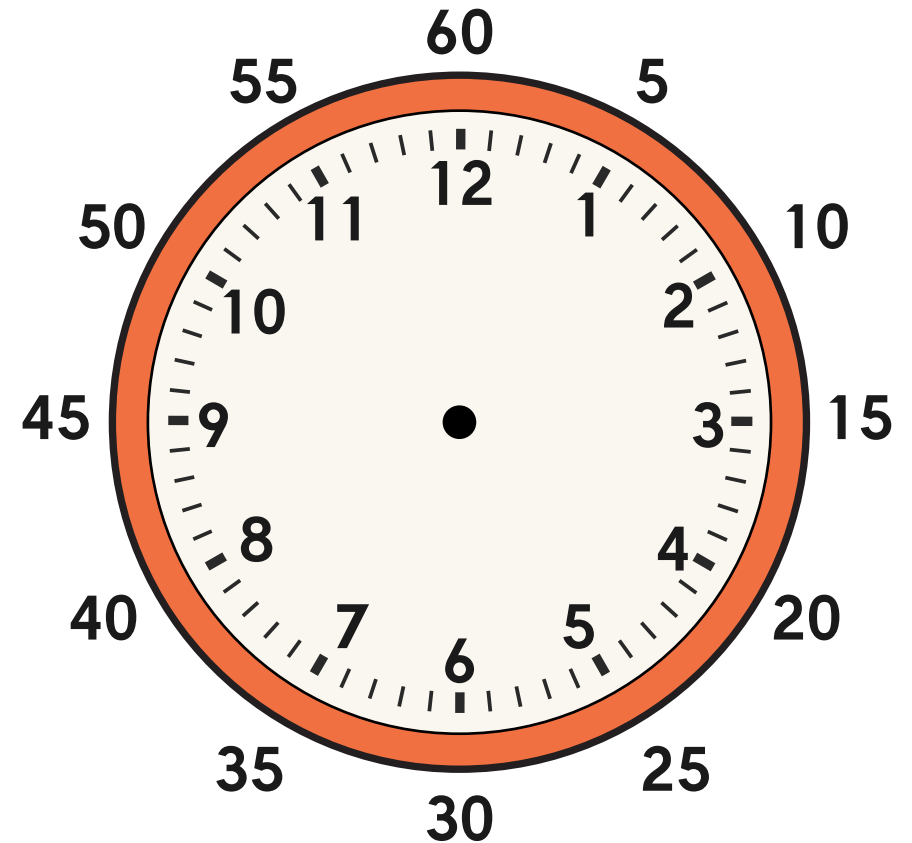
Quarter past five

Quarter to five

Telling the time to five minutes

There are 60 minutes in one hour.
This is how long it takes the minute hand to get from 12 and travel clockwise all the way round back to 12.

Each number on the clock represents a five minute interval.

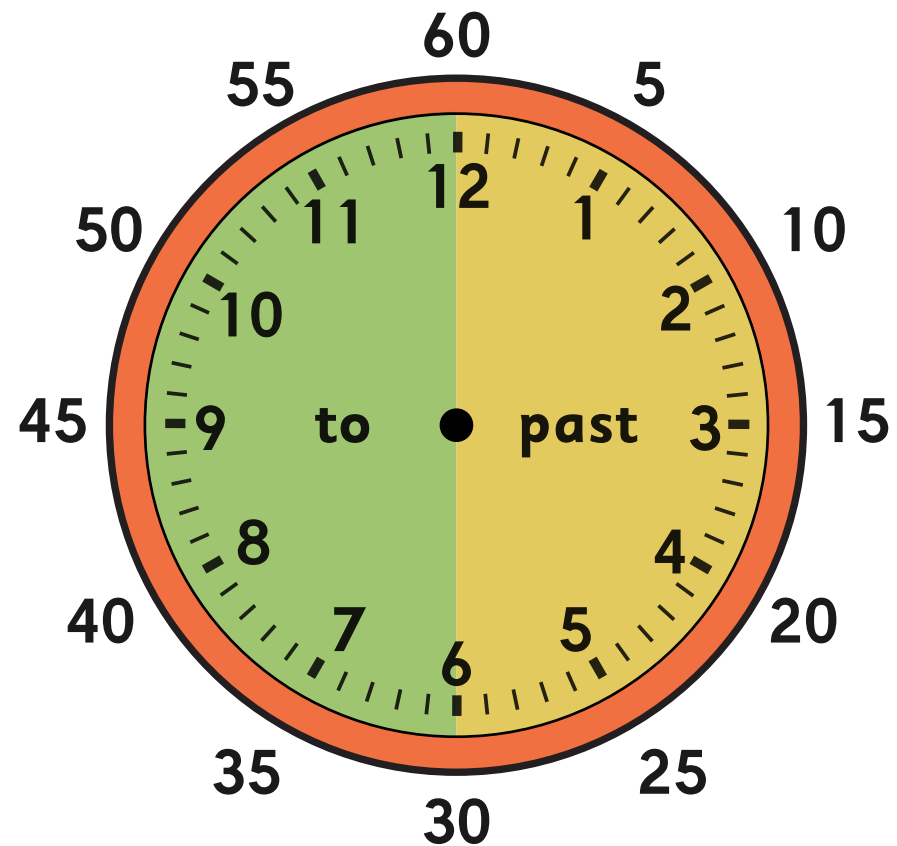


Telling the time to five minutes

When we tell the time to five minutes, we will say either past or to.

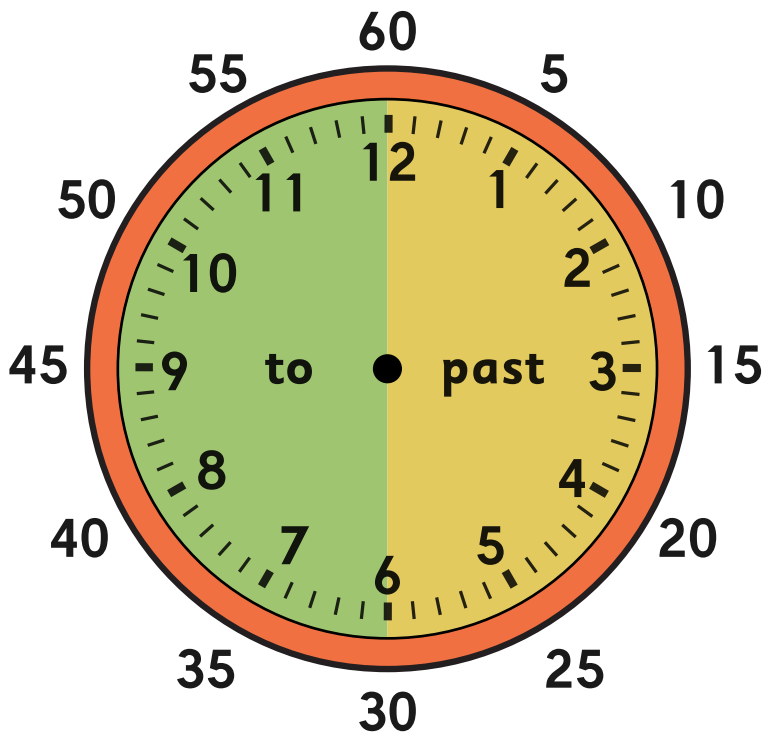
e.g

five minutes past seven
or five minutes to seven.



Telling the time to five minutes

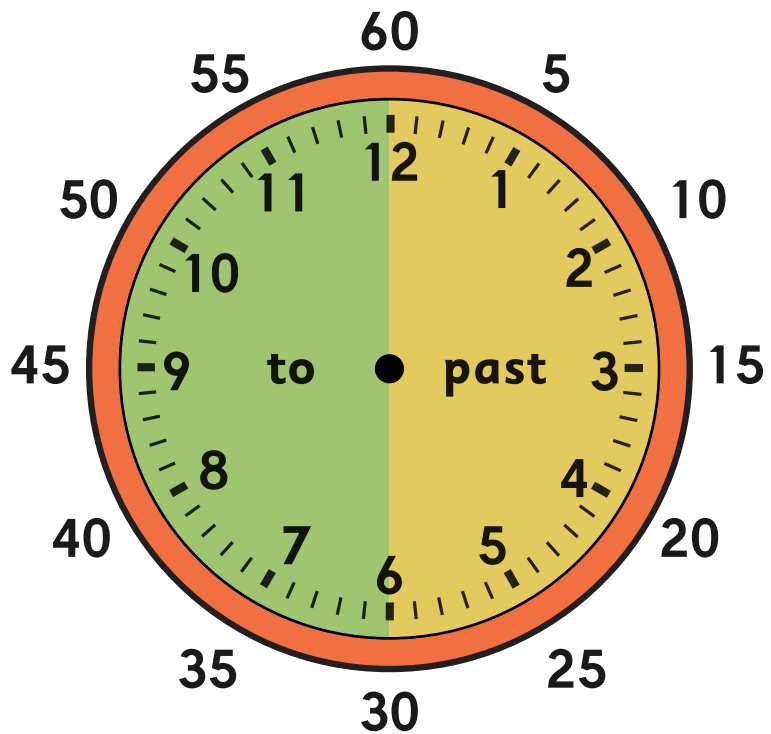
How would we say the times shown by the two clocks to the right?



Telling the time to five minutes

answers

How would we say the times shown by the two clocks to the right?



five minutes to twelve



five minutes past six



Telling the time to five minutes

What time is being shown by the two clocks?

What do you notice about the hour hands?



Telling the time to five minutes

answers

The hour hand moves as well as the minute hand.

If it is minutes past, the hour hand will be closer to the hour just gone.

If it is minutes to, the hour hand will be closer to the next hour.



**Twenty minutes
past 12**

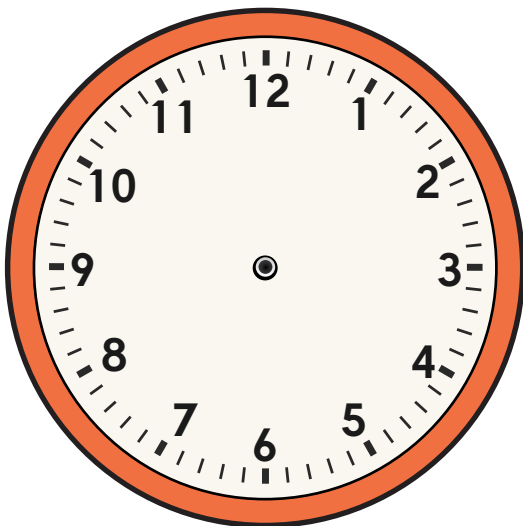


**Twenty minutes
to one**

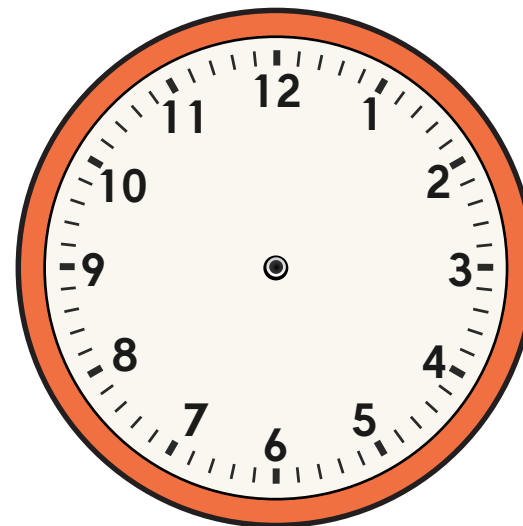


Telling the time to five minutes

Draw on the minute and hour hands to show the correct time.



This clock should say five minutes to nine.



This clock should say twenty minutes past nine.



Telling the time to five minutes

answers

10

Draw on the minute and hour hands to show the correct time.



This clock should say five minutes to nine.



This clock should say twenty minutes past nine.



Spot the error



This clock is showing ten minutes to one.
There is something wrong with the hour hand.

Can you work out what it is?



Spot the error

answers



This clock is showing ten minutes to one.
There is something wrong with the hour hand.

Can you work out what it is?

The hour hand should be much closer to the next hour (one o'clock).



Your turn! Try the worksheet.

Telling the time
to 5 minutes

$$2+2=4$$

Fluency



 grammarsaurus.co.uk

1)



minute

hour

The hand is the longer hand on a clock.

The hand is the shorter hand on a clock.



www.grammarsaurus.co.uk